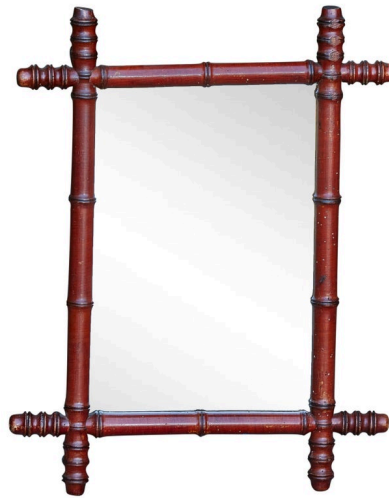


WALNUT 1920S FRENCH FAUX-BAMBOO SMALL MIRROR WITH BROWN COLOR AND REEDED ACCENTS



\$895

A French 1920s walnut faux-bamboo mirror with rich brown color, reeded accents in the intersecting corners and small proportions. Step into the elegance of the Roaring Twenties with this French walnut faux-bamboo mirror, circa 1920. Boasting small proportions, this piece is ideal for adorning intimate spaces or adding a touch of sophistication to a curated wall.

Meticulously crafted from rich walnut, the frame's deep brown color exudes an air of regality. The faux-bamboo design is elevated by reeded accents in the intersecting corners, which bring an extra layer of texture and depth, paying homage to the era's penchant for detailed craftsmanship. Slight traces of aging on the mirror plate narrate a rich history, while the modern wiring at the back ensures it's ready to grace your walls vertically. Whether part of a stately living room, a chic boudoir, or an elegant hallway, this mirror is more than a reflective surface; it's a portal to a time of glamour and refinement. Infuse your interiors with a dash of antique French elegance with this walnut faux-bamboo mirror. Its rich brown hue, reeded accents, and authentic patina make it a must-have piece for those in quest of historical charm and timeless grace.

Height: 22 in (55.88 cm)

Width: 16.75 in (42.55 cm)

Depth: 1 in (2.54 cm)

SKU: A 4475