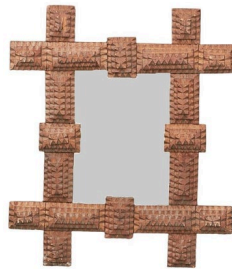


English Accent Antiques
425 Peachtree Hills NE, No. 18
Atlanta, GA 30305
[404.351.9433](tel:404.351.9433)
info@englishaccentantiques.com



PETITE TURN OF THE CENTURY FRENCH BROWN TRAMP ART MIRROR WITH PROTRUDING CORNERS



\$1,500

A petite French Turn of the Century hand-carved wooden Tramp Art mirror from circa 1900 with protruding corners. Immerse your home in the rustic charm and artistry of this petite French Turn of the Century hand-carved wooden Tramp Art mirror from circa 1900. Its timeworn appearance, reminiscent of years of use and patina, exudes a sense of authenticity and warmth that will add a touch of character to any space. The mirror's protruding corners, a distinctive feature of Tramp Art, add visual interest and dimension to the piece. The intricately carved patterns showcase the craftsmanship and artistry of the era, making this mirror a true testament to folk art. The mirror can be displayed either vertically or horizontally, offering versatility to suit your décor needs. With its charming size and rustic appeal, this petite French Turn of the Century hand-carved wooden Tramp Art mirror can be seamlessly integrated into various settings in your home. Hang it in your bedroom above a nightstand or console table to add a unique touch of personality. Place it in your living room on a shelf or mantelpiece to enhance the room's character. Or, adorn your entryway with this charming piece, welcoming guests with its warm and inviting presence. Whether you use it for its practical purpose of checking your reflection or simply admire its intricate details, this mirror is sure to become a cherished piece in your home. It's a reminder of the enduring beauty and artistry of Tramp Art, a style that continues to captivate the hearts of collectors and admirers alike.

Height: 17 in (43.18 cm)

Width: 15 in (38.1 cm)

Depth: 1.5 in (3.81 cm)

SKU: A 4649