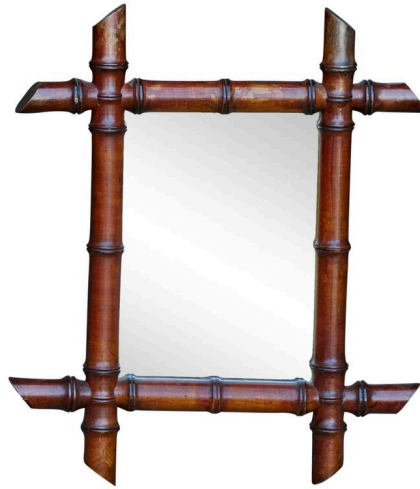


## PETITE FRENCH FAUX BAMBOO WALNUT MIRROR CIRCA 1920 WITH SLANTED ACCENTS



**\$775**

A petite French walnut faux bamboo mirror from circa 1920 with slanted accents in the intersecting corners, brown patina and rustic character. Introducing a petite marvel from the Roaring Twenties: this French walnut faux-bamboo mirror, circa 1920, is a graceful nod to an era defined by elegance and charm. Constructed with sturdy walnut, this piece radiates a rustic character that is both timeless and captivating. What sets this mirror apart are the slanted accents adorning the intersecting corners, adding a dimensional flair to the frame. The earthy brown patina graces the walnut with a rich, warm hue, inviting the opulence of history into your modern abode. Notice the endearing aging in the upper left section of the mirror plate, a gentle reminder of the tales this artifact has witnessed over the decades. This antique treasure is wired in the back, all set to elevate your walls with its captivating presence. Be it the hallway, powder room, or a cozy reading nook, this French walnut faux-bamboo mirror is bound to be the conversation starter. With its refined aesthetics and rich history, it effortlessly bridges the gap between past splendor and contemporary chic. Engulf your space with a piece that's more than decor; it's a story waiting to be told.

Height: 15.75 in (40.01 cm)

Width: 13 in (33.02 cm)

Depth: 1 in (2.54 cm)

**SKU: A 4476**