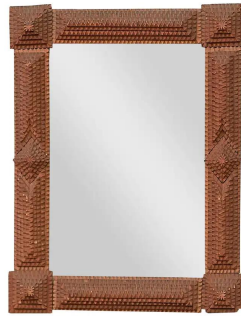


English Accent Antiques
425 Peachtree Hills NE, No. 18
Atlanta, GA 30305
[404.351.9433](tel:404.351.9433)
info@englishaccentantiques.com



FRENCH TURN OF THE CENTURY HAND CARVED WOOD TRAMP ART MIRROR WITH BROWN PATINA



\$1,150

A small French Tramp Art hand carved wooden Folk mirror from the early 20th century with raised diamond motifs and protruding corners. Created in France during the Turn of the Century which saw the transition between the 19th to the 20th, this

Folk mirror was hand carved in the manner typical of the Tramp Art style. Consisting of a rather linear frame accented with protruding corners, the mirror features a layered texture made of a series of overlapping notches. Adorned with raised diamond motifs, the mirror boasts a brown patina. The back is wired, the mirror is ready to be hung. Simple yet elegant, this small French

Tramp Art folk hand carved mirror circa 1900 will bring a touch of authenticity to any wall, particularly displayed in a mountain cabin or country home.

Height: 14.5 in (36.83 cm)

Width: 11 in (27.94 cm)

Depth: 1 in (2.54 cm)

SKU: A 4215