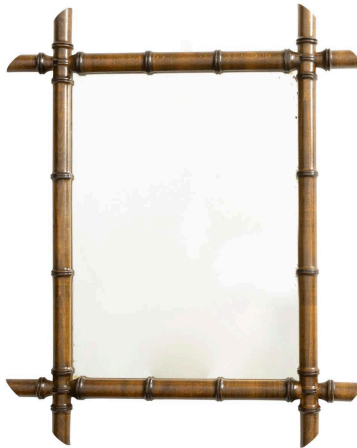


FRENCH 1920S RECTANGULAR FAUX BAMBOO WALNUT MIRROR WITH BROWN PATINA



\$2,450

A French rectangular faux-bamboo walnut mirror from the early 20th century, with brown patina. Created in France during the first quarter of the 20th century, this rustic mirror features a rectangular silhouette made of a thin brown faux bamboo walnut frame showcasing intersecting corners. Surrounding a central mirror plate, this French walnut mirror circa 1920 charms us with its rustic appearance and lovely color, making it a great choice to decorate any wall, particularly displayed in a mountain cabin or country home.

Height: 25.5 in. (64.77 cm)

Width: 21.25 in. (53.98 cm)

Depth: 1 in. (2.54 cm)

SKU: A 3309